



**DIPLOMA IN CIVIL AND ENVIRONMENTAL  
ENGINEERING**

**CENTRALIZED QUESTION BANK**

**1010234540 - CONSTRUCTION PRACTICES**

**DIRECTORATE OF TECHNICAL  
EDUCATION GOVERNMENT OF  
TAMILNADU**

## DIPLOMA END SEMESTER / YEAR EXAMINATION – 2025

**Course:** Civil and Environmental Engineering

**Subject:** Construction Practices

**QP Code:** 1010234540

**Time:** 3 Hours

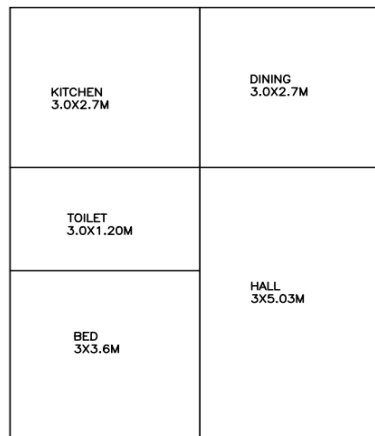
**Date:**

**Session:**

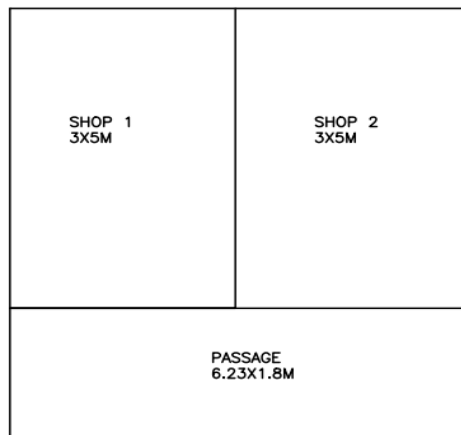
**Max Marks:** 100

### Answer the following Questions

1. Prepare and develop a centre line plan, foundation Plan and set out spread footing in the field for the given line sketch of a building



2. Prepare and develop a centre line plan, foundation Plan and set out the layout of columns and footing in the field for the given line sketch of a building (Framed structure).



3. Arrangement of bricks using English bond in one brick thick wall and half brick thick for right angled corner.
4. Arrangement of bricks using English bond in one brick thick wall and half brick thick for Tee junction.
5. Arrangement of bricks using English bond in one brick thick wall and Two brick thick wall square pillars.
6. Construct concrete block masonry wall of 1m height.
7. Cutting, hooking, cranking of specimen reinforcement bar and arrangement of Reinforcement for a Lintel cum sunshade.
8. Cutting, hooking, cranking of specimen reinforcement bar and arrangement of reinforcement for a one way roof slab.
9. Cutting, hooking, cranking of specimen reinforcement bar and arrangement of Reinforcement for singly reinforced Beam.
10. Cutting, hooking, cranking of specimen reinforcement bar and arrangement of Reinforcement for a Column and footing.
11. Apply two or more coats of selected paint on the prepared base of a given wall surface for the area of 1m x 1m using suitable brush/ rollers adopting safe practices.
12. Plastering with cement mortar on the prepared base of a given wall surface for the area of 1m x 1m adopting safe practices.
13. Apply the relevant termite chemical on given damaged sample of timber.

#### **Allocation of Marks**

<b>Sl. No</b>	<b>Description</b>	<b>Marks</b>
1	Aim and Apparatus Required	10
2	Tabulation / observation	20
3	Graph / Sketch / Calculation	20
4	Result	10
5	Written Test	30
6	Viva Voce	10
	Total	100